

A woman with long, wavy brown hair is sitting on a white wicker chair outdoors. She is wearing a blue long-sleeved top with intricate white embroidery on the chest and a grey shawl with a subtle pattern draped over her shoulders. She is smiling slightly and looking towards the camera. The background features a brick wall on the left, a stone pillar, and a lush green landscape under a blue sky with light clouds.

  
HARIYAALI™  
*Fashion Starts Here*

KAASHVI  
with inner





SUCH ELEGANT COLLECTION

6003



UNIQUE AND ORIGINAL



6006







TRY NEW COLLECTION

6005

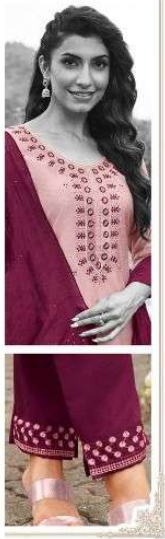




CREATE CHARISMATIC PERSONALITY

6004





NEW COLLECTION FOR EVERY OCCASION!

6010





6003

6004

**HARIYAALI**<sup>TM</sup>  
*Fashion Starts Here*



6005

6006



6009

6010



6007

6008

**KAASHVI**  
 with inner







REDEFINE NEW TREND

6008

