



SWISH[®]
•INSPIRED BY FASHION•

be

RICH

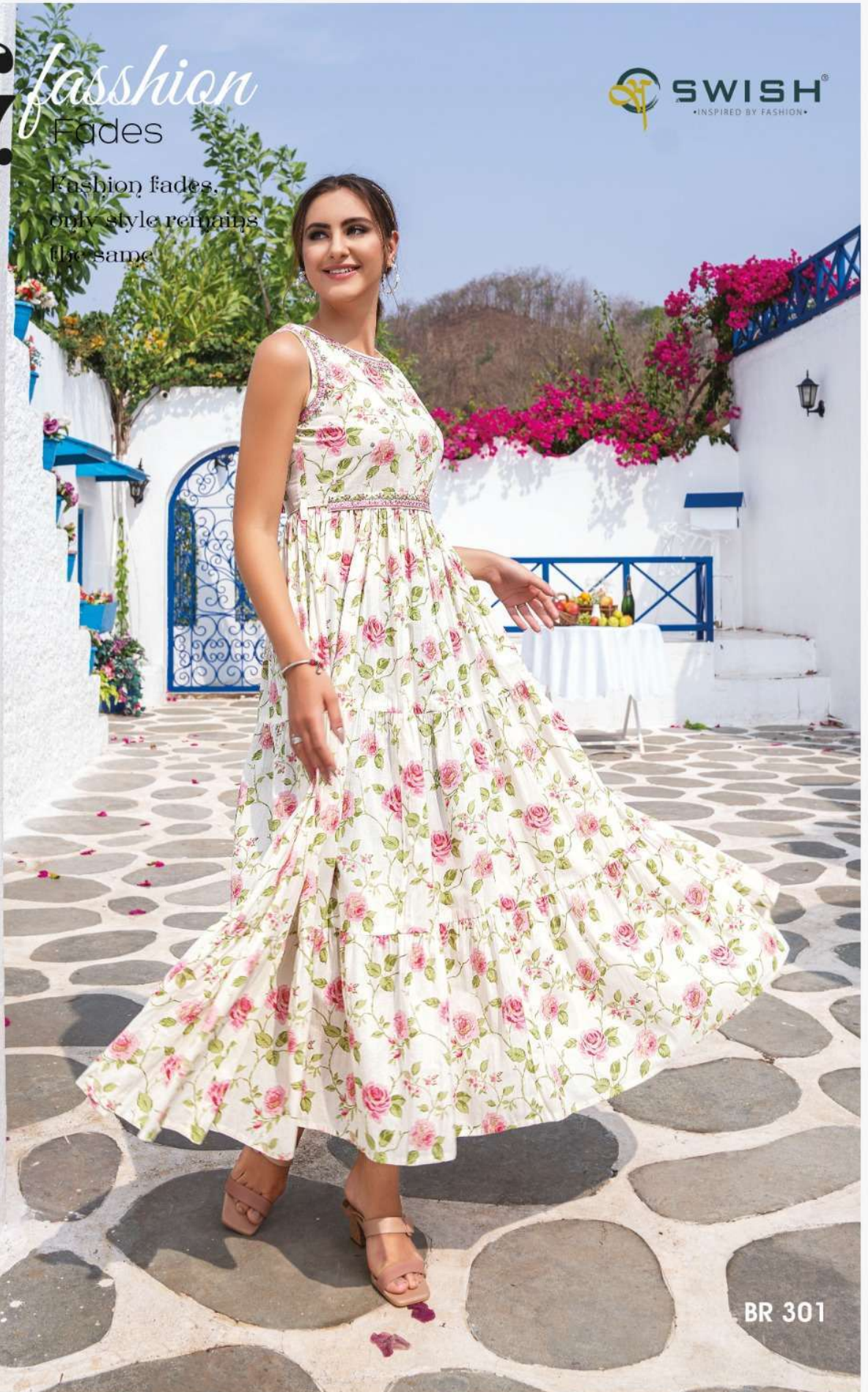
Vol.3



fashion

Fades

Fashion fades,
only style remains
the same



BR 301





BR 303



Extreme Beauty

leave the ordinary behind & go stylish



BR 302



R Mood Effect

Special occasions
need special attires





SWISH
INSPIRED BY FASHION

Being
Classy

Being classy
isn't a choice
Its a lifestyle

BR 304



SWISH[®]
INSPIRED BY FASHION

Magical
mystery

Style is a way to say
who you are without
having to speak



BR 305

A woman with her hair in a ponytail is smiling and posing on a balcony. She is wearing a black sleeveless dress with a vibrant floral pattern in shades of red, green, and gold. The dress has a full, tiered skirt. She is also wearing silver strappy high-heeled sandals. The balcony has a blue metal railing and a white wicker chair. In the background, there are white walls, a blue archway, and lush green plants with bright pink flowers. The sky is clear and blue.

SWISH
INSPIRED BY FASHION

BR 306

Trend
Alert
Flow with
fresh trends





BR 301



BR 302



BR 303



BR 304



BR 305



BR 306



BR 307

 **SWISH**[®]
INSPIRED BY FASHION

ARROGANT

Style

Being classy
isn't a choice
Its a lifestyle



BR 307